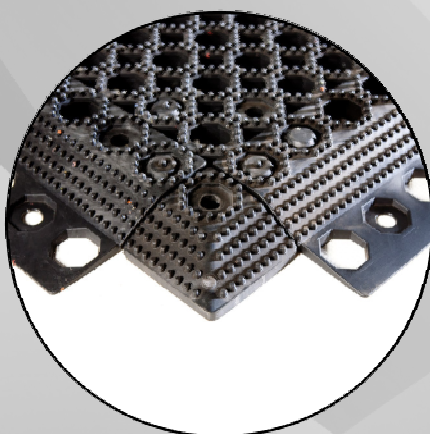
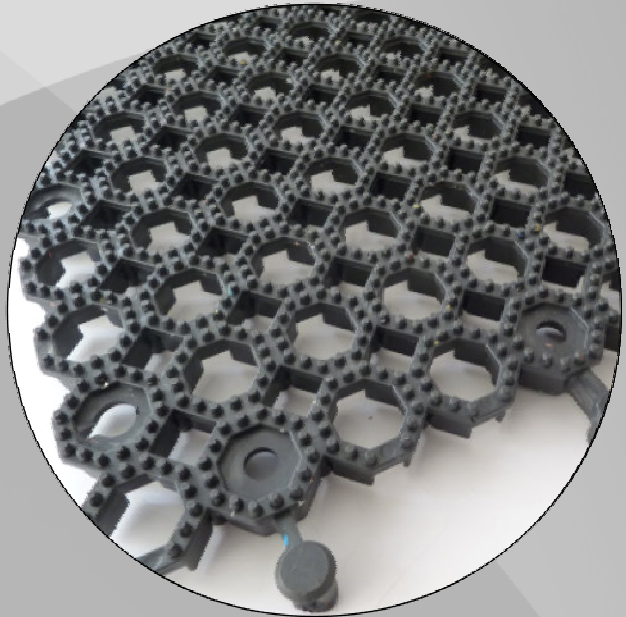


CellPave™ GP from Groundtrax is a durable, easy-to-lay paving system.

Made from 100% recycled material and is compliant to permeable paving regulations offering an 85% void for excellent water permeation. CellPave™ GP is unique amongst its competitors because of the 'spring like' elements within the grid, giving flexibility both horizontally and vertically. Simply lay CellPave™ GP on top of any grassed area, connect together and it can be driven on immediately or backfill with sand, soil or decorative stone for a variety of finishes.

The construction of CellPave™ GP improves vehicle traction and prevents rutting. After two to three months of a grass growing season CellPave™ GP is almost invisible.

The flexibility of CellPave™ GP means they can be laid on undulating surfaces and gradients, without fear of fracture or separation. Whilst CellPave™ GP is designed for permanent use, it can be laid temporarily and removed if only required for a short period of time.



CellPave™ GP with optional corner piece and edging

FEATURES & BENEFITS

- Fixing solutions available or can be overlaid on existing grassed surfaces
- Protects property and grounds from damage
- Extremely cost effective in use
- Supports heavy traffic on firm ground
- Improves traction
- Provides secure access for vehicles and pedestrians over soft ground
- Avoids the need for expensive aluminium or heavy duty systems and groundworks
- Resists deformation and fracture
- Rot proof, water resistant and tough - a better and more sustainable option than wood
- Simple to transport, carry, lay and store
- Moulds to irregular surfaces and gradients
- Made from 100% recycled materials and 100% recyclable after use



APPLICATIONS

- Construction and civil engineering projects
- Utilities and infrastructure access
- Emergency access routes
- Landscaping and groundworks
- Outdoor events and festivals
- Winter weather surfaces
- Temporary roadways and car parks
- Heritage sites, national parks and gardens
- Golf courses and sports fields
- Sport and leisure facilities
- Cemeteries
- Overspill car parks
- Drives, paths and cycle routes
- Grassed areas used occasionally as vehicle or pedestrian areas
- SUDs compliant (sustainable urban drainage system)

TECHNICAL SPECIFICATIONS

MATERIAL:	Recycled Polymers
TILE DIMENSIONS:	500mm x 500mm wide x 23mm (+/-2%)
WEIGHT:	6.4kg per m ² (+/-2%)
NOMINAL CELL DIMENSIONS:	50mm x 50mm
CONNECTION METHOD:	Interlocking lugs (using joining tool) 20 connections per tile
COLOUR:	Black
UV STABILISED:	Yes
PALLET QUANTITY:	75m ²
FIRE CLASSIFICATION REACTION:	BFL - S1
SLIP RESISTANCE:	BS EN 7188



For more information, contact us
today or visit our website:

www.groundtrax.com

GROUNDTRAX
Ground Protection and Reinforcement
Telephone: 03456 800008 | Fax: 03456 800208
E-Mail: info@groundtrax.com | Website: www.groundtrax.com